



LMEsword Print Warrant Installation Guide

Version 1.4

Please respond to:

Carl Harri

Department, Phone Number

THE LONDON METAL EXCHANGE AND LME CLEAR LIMITED

10 Finsbury Square, London EC2A 1AJ | Tel +44 (0)20 7113 8888

The London Metal Exchange is registered in England no 2128666.

LME Clear Limited is a private limited company and is registered in England no 07611628.

Registered offices as above.

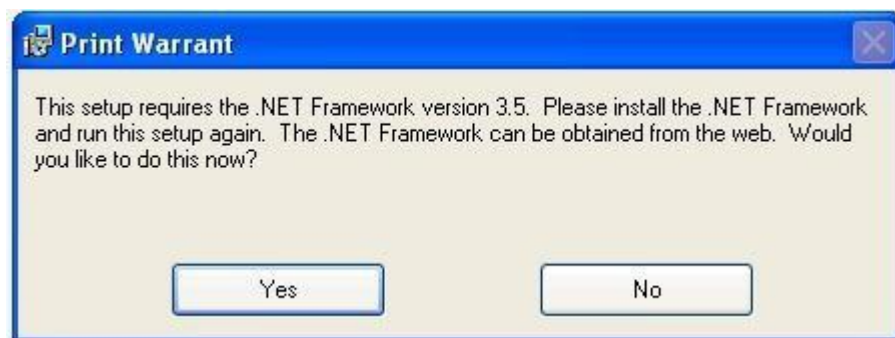
LME.COM

1 System Requirements

1. Windows XP or Windows Vista or Windows 7
2. Crystal Reports 2008 Redistributable (available on the LME website)
3. .NET Frameworks 3.5 SP1

2 Installation Instructions

1. Log into the computer as an administrator.
2. Download the Print Warrant and Business_Objects-Crystal_Reports_Redist2008_x64.msi from the [LME website](#) at the bottom of the page.
3. Install Crystal Reports 2008 Redistributable
 - 3.1. Run Setup.exe to install the Print Warrant Application
 - 3.2. If this dialog appears click Yes to install the .NET Framework version 3.5.



If you get **Microsoft Windows Installer 3.1 exceptions** please go to <http://www.microsoft.com/downloads/details.aspx?FamilyID=889482FC5F56-4A38-B838-DE776FD4138C&displaylang=en> and install the files to upgrade your computer. This will require a computer restart. When this is done run the Print Warrant setup.msi again.

The time taken to install the .NET Framework 3.5 depends on the speed of the internet connection. The installation of the .NET Framework 3.5 can take up to 30 minutes. When this is done run the Print Warrant setup.msi again.

- 3.3. Leave all the settings as default. Keep clicking Next until the Print Warrant installation is done (this will take up to 2 minutes to complete).

3 Checking the Installation

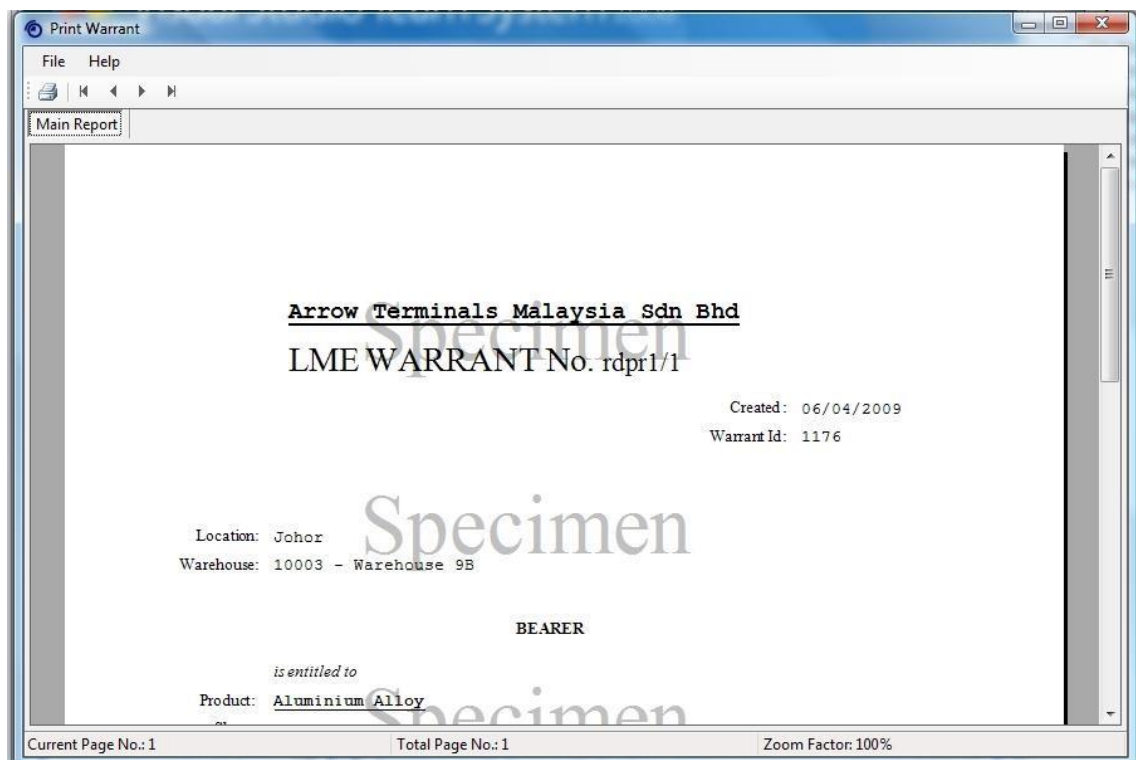
Log onto the LMEsword website and try to print a Warrant. When the Warrant print has been dual authorised click on the Print Warrant button.

You may see this IE message





If you do, untick the Always ask before opening this type of file tick box. Then click the 'Open' button. The following should then load:



If you do not see this then the Print Warrant Installation has not worked. Please contact Support for more information.

4 Uninstalling

1. Log onto the computer as an administrator.
2. Open Control Panel | Add or Remove Programs.
3. Locate Print Warrant and click on the Remove button.



5 Common Problems & Solutions

1. The file extension (.warrant) for the Print Warrant application has been associated with a different program.

If a user attempts to print a warrant before the Print Warrant application has been installed (and the file association made) they will be prompted to choose a program with which to open the warrant file. If they choose a program, for example Word, installing the Print Warrant application will not overwrite the file association with the correct application and the association will need to be made manually.

1.1. In XP

- 1.1.1. Open windows explorer and select Tools -> Folder Options... from the menu.
- 1.1.2. Select File Types
- 1.1.3. Find and select WARRANT in the registered file types: list click
- 1.1.4. Change to open the **Open With** dialogue.
- 1.1.5. Click Browse... to open the Open With... dialogue.
- 1.1.6. Navigate to C:\Program Files (x86)\LME\LMEsword Print Warrant
- 1.1.7. Select LME.Sword.Print.Warrant.exe
- 1.1.8. Click Open
- 1.1.9. Click OK
- 1.1.10. Click Close

1.2. In later version of Windows

- 1.2.1. Open Control Panel
- 1.2.2. Select Default Programs
- 1.2.3. Select Associate a file type or protocol with a program
- 1.2.4. Find and Select .warrant from the list
- 1.2.5. Click Change program... to open the Open With dialogue
- 1.2.6. Navigate to C:\Program Files (x86)\LME\LMEsword Print Warrant
- 1.2.7. Select LME.Sword.Print.Warrant.exe
- 1.2.8. Click Open
- 1.2.9. Click OK
- 1.2.10. Click Close

2. The File Open Dialog does not give you the option to 'Open' the downloaded warrant file, it just gives the option to 'Save' & 'Cancel'.

2.1. In XP

- 2.1.1. Open windows explorer and select Tools -> Folder Options... from the menu
- 2.1.2. Select File Types
- 2.1.3. Find and select WARRANT in the Registered file types: list
- 2.1.4. Click Advanced
- 2.1.5. Ensure that the 'Confirm open after download' option is checked and click OK.

3. Blank warrants are being printed.

- 3.1. Check that the settings for the printer have a page size of 'A4'

4. Internet explorer stops giving the option to 'Open'

- 4.1. In Internet Explorer 6 open Tools->Internet Options->Advanced and click Restore Defaults



- 4.2. In Internet Explorer 7 open Tools->Internet Options->Advanced and click Reset
5. Print Warrant application fails to start. It can briefly be seen in test manager but immediately exits.
6. Rename the registry key

HKEY_CURRENT_USER\Software\Microsoft\Windows
NT\CurrentVersion\AppCompatFlags\Layers

Name: C:\Program Files (x86)\LME\LMEsword Print Warrant\LME.Sword.PrintWarrant.exe Type:
REG_SZ

Data: WIN98

Change the name to C:\Program Files (x86)\LME\LMEsword Print
Warrant\LME.Sword.PrintWarrant.exe_

Where C:\Program Files\LME\LMEsword Print Warrant\ is the install location of the application.

